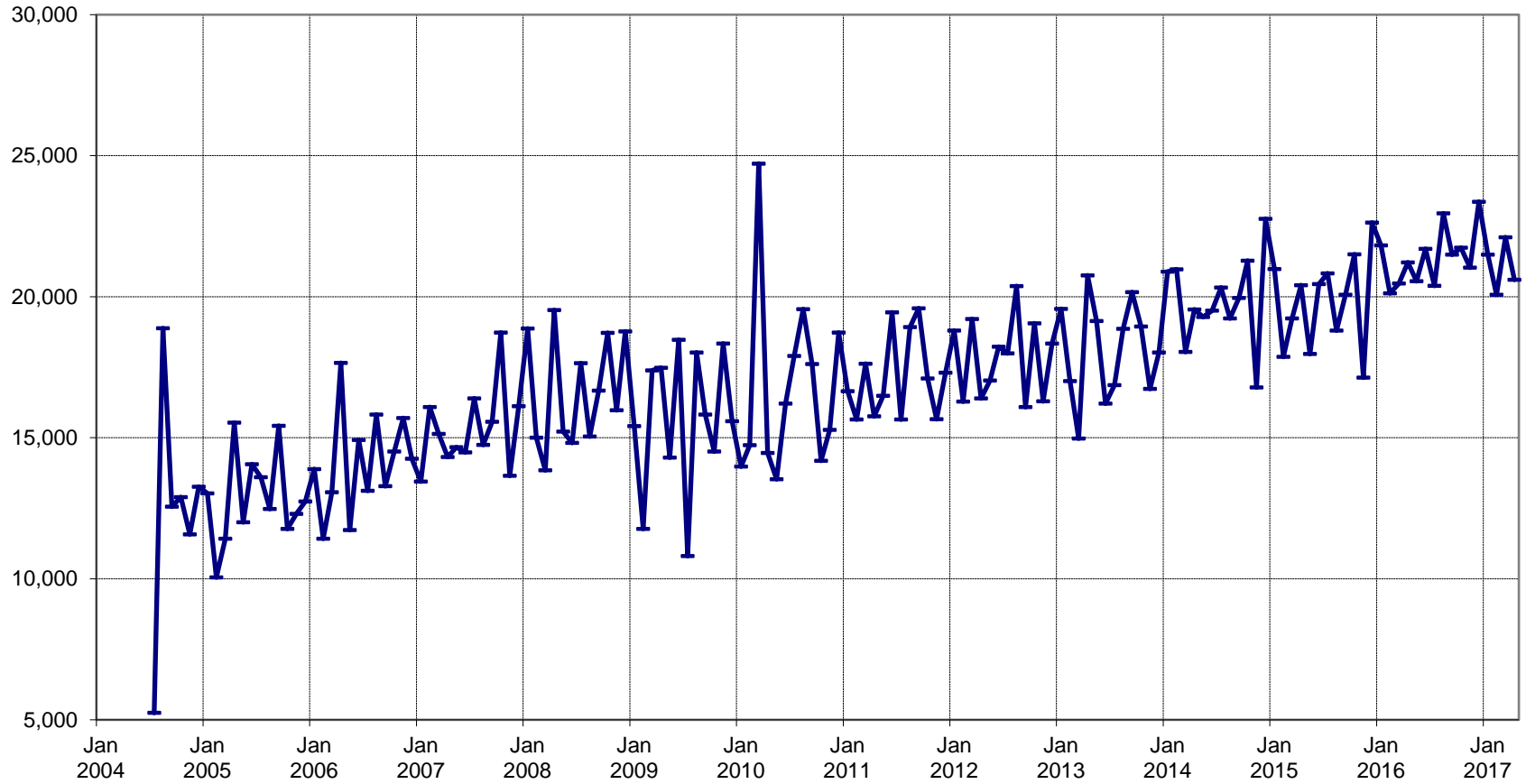
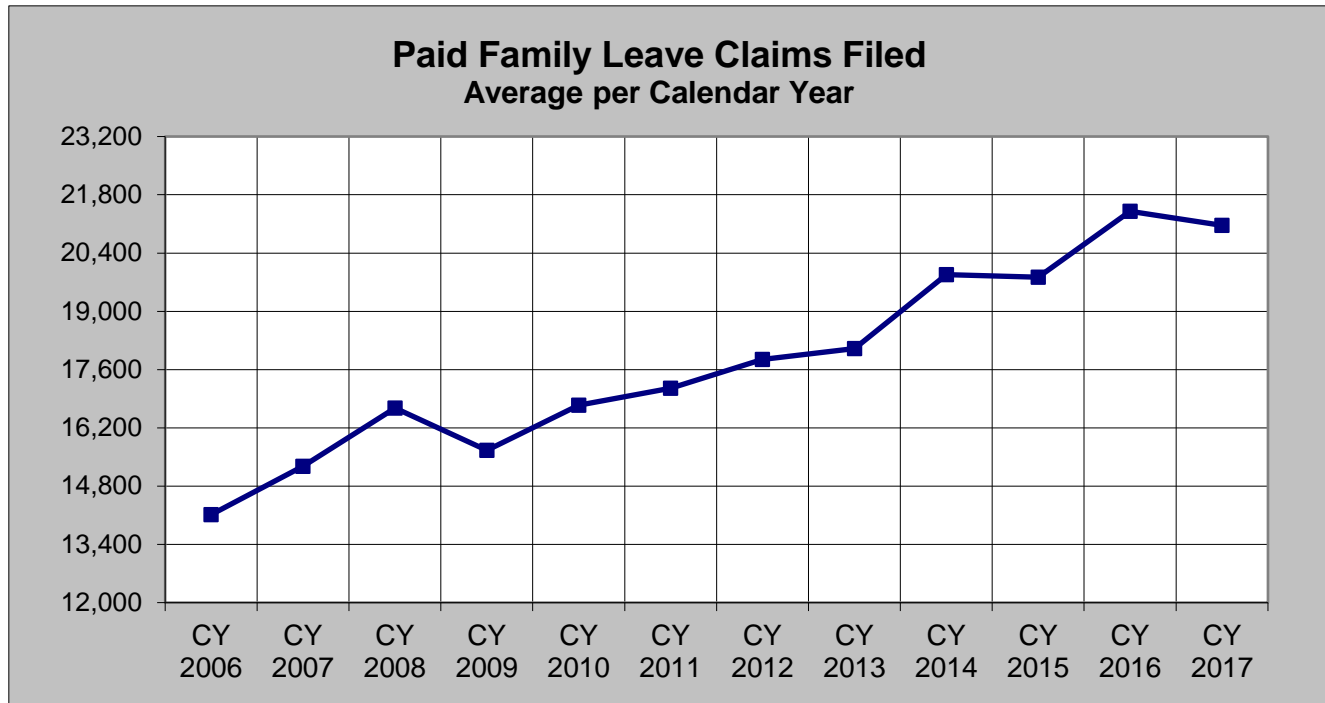


State Disability Insurance - Quick Statistics Paid Family Leave Claims Filed





**State Disability Insurance
- Quick Statistics
Paid Family Leave Claims
Filed**

Month	CY 2006	CY 2007	CY 2008	CY 2009	CY 2010	CY 2011	CY 2012	CY 2013	CY 2014	CY 2015	CY 2016	CY 2017
Jan	13,884	13,443	18,874	15,412	13,984	16,650	18,803	19,573	20,886	20,983	21,818	21,490
Feb	11,417	16,090	15,003	11,768	14,742	15,651	16,286	17,014	20,972	17,874	20,123	20,074
Mar	13,067	15,136	13,846	17,383	24,720	17,625	19,206	14,976	18,042	19,230	20,464	22,103
Apr	17,657	14,314	19,525	17,480	14,464	15,756	16,392	20,759	19,548	20,404	21,212	20,597
May	11,724	14,668	15,215	14,296	13,525	16,491	17,030	19,143	19,286	17,969	20,548	
Jun	14,923	14,486	14,821	18,478	16,209	19,442	18,232	16,206	19,507	20,452	21,693	
Jul	13,124	16,397	17,649	10,804	17,899	15,645	17,996	16,866	20,324	20,823	20,383	
Aug	15,821	14,752	15,040	18,027	19,560	18,926	20,376	18,861	19,230	18,805	22,961	
Sep	13,281	15,563	16,672	15,823	17,618	19,585	16,091	20,162	19,962	20,071	21,494	
Oct	14,512	18,725	18,714	14,517	14,188	17,105	19,061	18,948	21,273	21,501	21,735	
Nov	15,702	13,651	15,978	18,345	15,279	15,655	16,291	16,730	16,783	17,128	21,036	
Dec	14,261	16,122	18,768	15,583	18,734	17,302	18,344	18,022	22,762	22,624	23,368	
Total	169,373	183,347	200,105	187,916	200,922	205,833	214,108	217,260	238,575	237,864	256,835	84,264

Paid Family Leave Program Began July 1, 2004