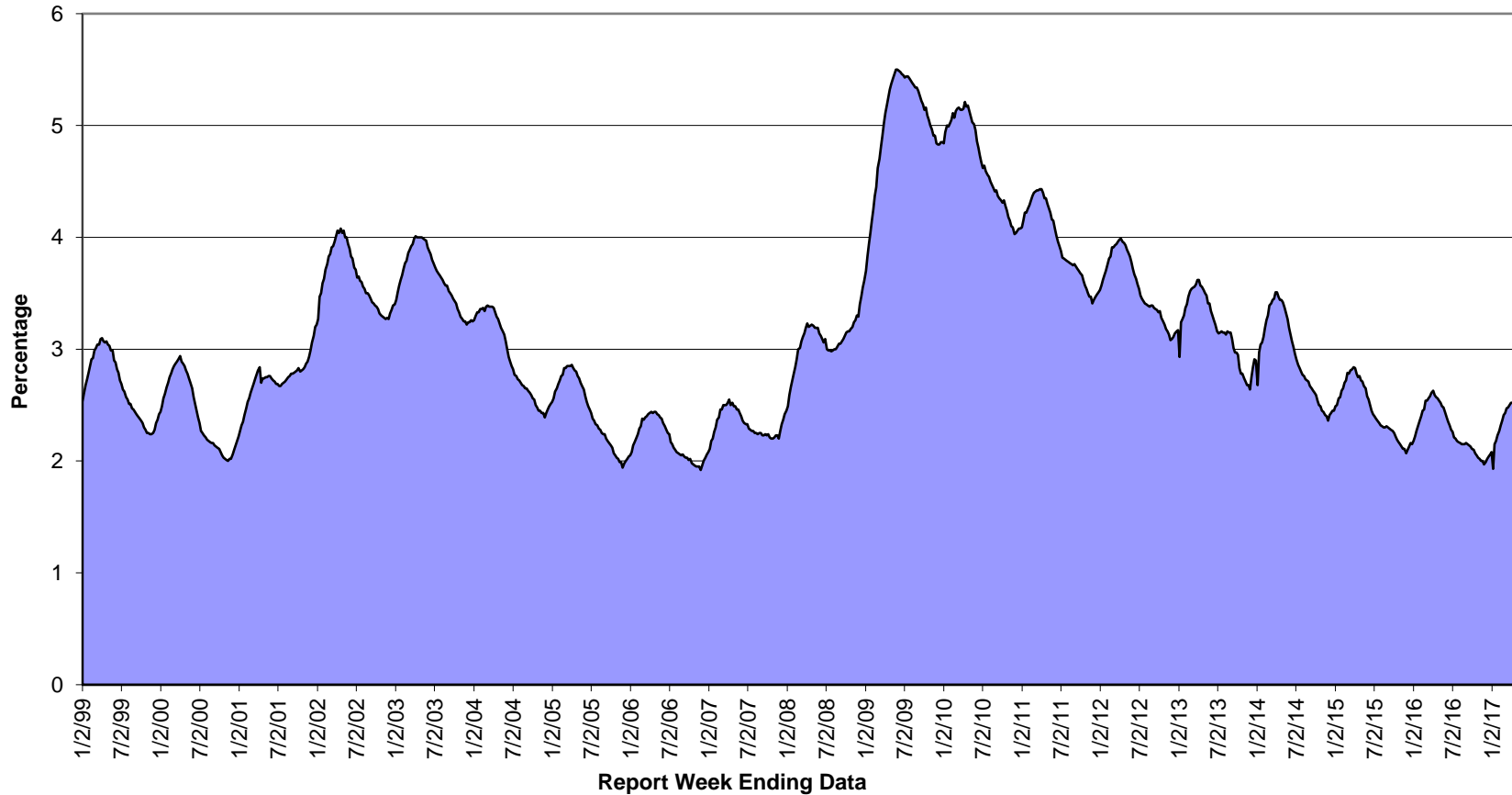


Unemployment Insurance - Quick Statistics

Insured Unemployment Rate-13 Week Average

The 13-week average is used by the Department of Labor to determine if states will become eligible for specific Federal extensions





Unemployment Insurance - Quick Statistics

Source: ETA 539

Insured Unemployment Rate (IUR) - Based on an Individual Week

Table with 48 columns (IUR, Filed Week) and 50 rows of data from 1997 to 2011. The table shows the insured unemployment rate based on an individual week, with values ranging from approximately 2.3% to 6.5%.

The weekly IUR is based on one week's data only.

Unemployment Insurance - Quick Statistics

Insured Unemployment Rate-Based on an Individual Week

