



Unemployment Insurance - Quick Statistics

Source: ETA 539

Insured Unemployment Rate-13 Week Average

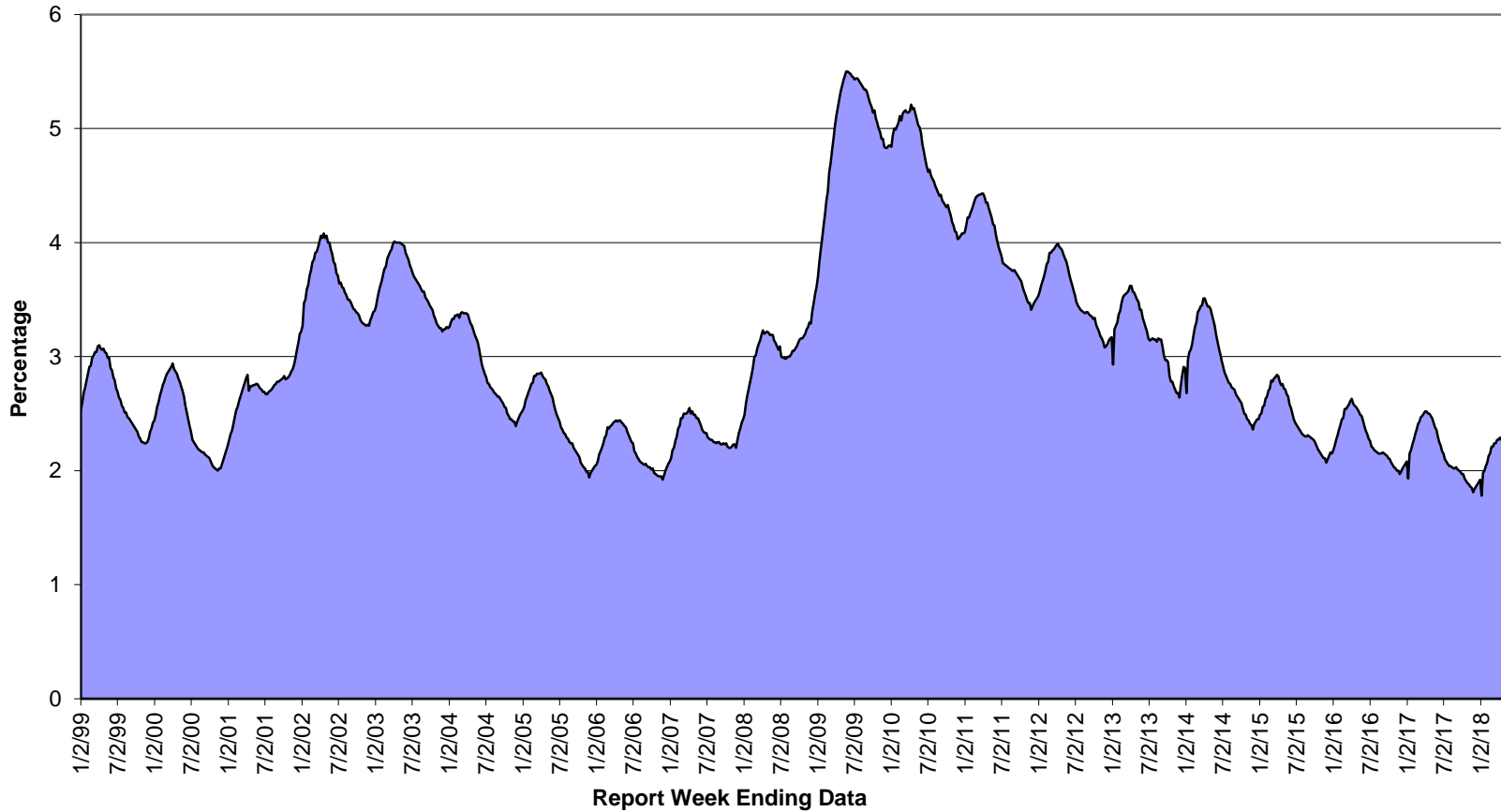
Table with columns for Filed Week Ended, IUR, and 13-week average values from 1999 to 2016. The table shows weekly fluctuations in the unemployment rate over a 17-year period.

The 13 week average IUR is calculated using data from the current week, plus 12 weeks prior to the current week. This 13-week average IUR is used by the Department of Labor to determine if states will become eligible for specific Federal extensions.

### Unemployment Insurance - Quick Statistics

#### Insured Unemployment Rate-13 Week Average

The 13-week average is used by the Department of Labor to determine if states will become eligible for specific Federal extensions





**Unemployment Insurance - Quick Statistics**

**Insured Unemployment Rate-Based on an Individual Week**

