



Unemployment Insurance - Quick Statistics

Insured Unemployment Rate-13 Week Average

Source: ETA 539

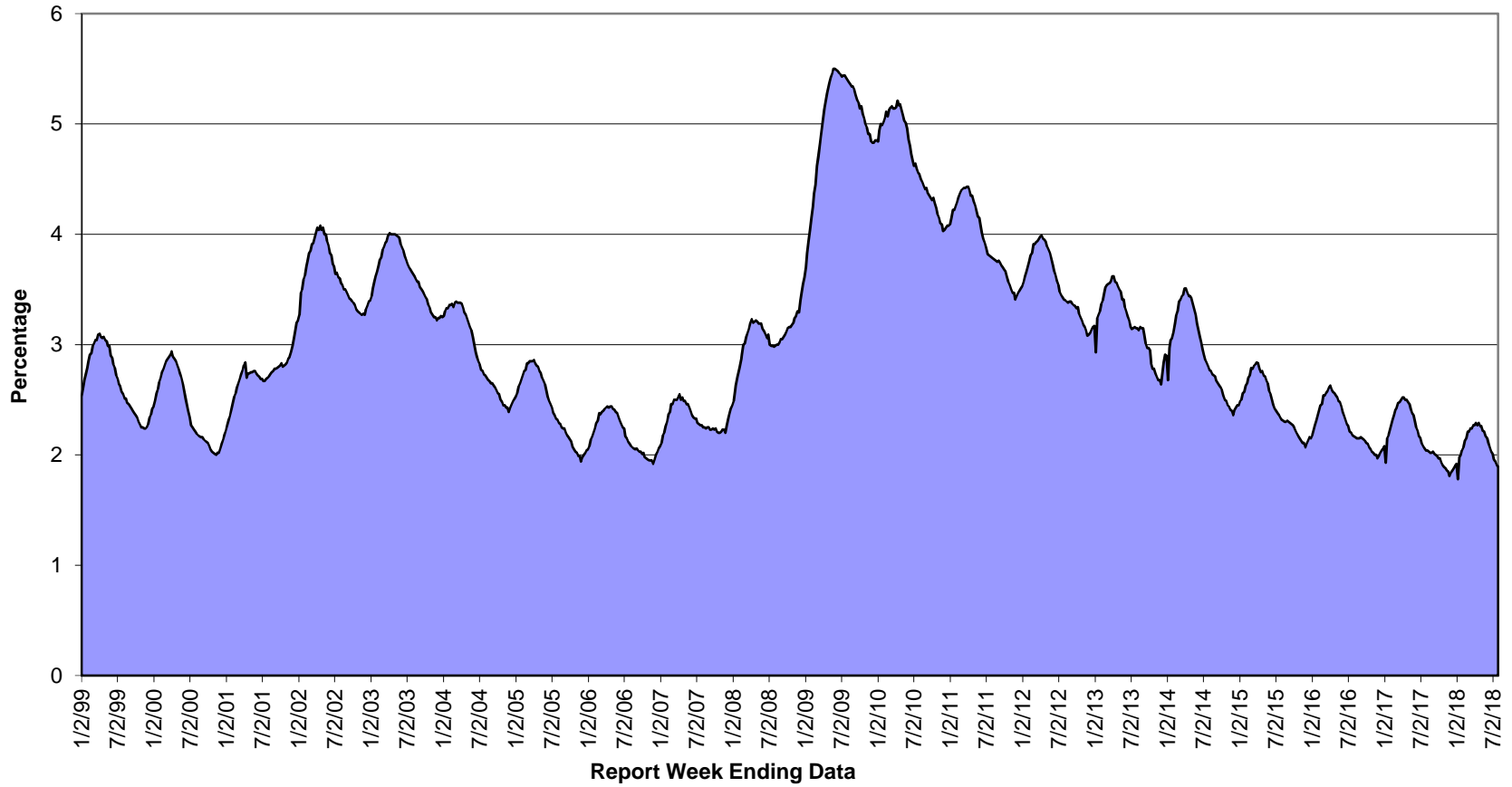
Table with 34 columns (Filed Week Ended, IUR) and 52 rows of data, showing unemployment rates from 1/2/1999 to 12/25/2018.

The 13 week average IUR is calculated using data from the current week, plus 12 weeks prior to the current week. This 13-week average IUR is used by the Department of Labor to determine if states will become eligible for specific Federal extensions.

Unemployment Insurance - Quick Statistics

Insured Unemployment Rate-13 Week Average

The 13-week average is used by the Department of Labor to determine if states will become eligible for specific Federal extensions





Unemployment Insurance - Quick Statistics

Source: ETA 539

Table with columns: Insured Unemployed Rate (IUR) - Based on an Individual Week. Columns are grouped by IUR Filed Week Ended (IUR) and IUR Filed Week Ended (IUR). Rows represent weekly data from 1/4/1997 to 12/31/2016.

The weekly IUR is based on one week's data only.

Insured Unemployment Rate-Based on an Individual Week

