



Why Use SDI Online?

Save Money

- No paper.
- No envelopes.
- No postage.

Secure

- Prevent and reduce fraud.
- Health Insurance Portability and Accountability Act compliant.
- Safeguards against the illegal use of your name and license to file false claims.

Convenient

- Faster and easier to file.
- Reduction in claim processing time.
- Immediate confirmation of claim filed.

Streamline claims processing and improve patient care by using SDI Online!



STATE OF CALIFORNIA

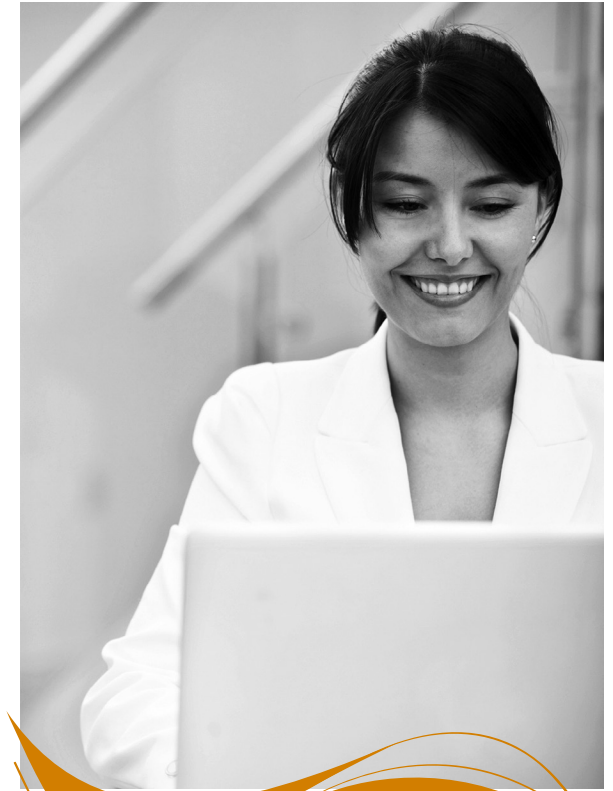
LABOR AND WORKFORCE DEVELOPMENT AGENCY

EMPLOYMENT DEVELOPMENT DEPARTMENT

The EDD is an equal opportunity employer/program. Auxiliary aids and services are available upon request to individuals with disabilities. Requests for services, aids, and/or alternate formats need to be made by calling 866-490-8879 (voice), or TTY 800-563-2441.

SDI ONLINE

for Physicians/Practitioners



Use SDI Online to efficiently process State Disability Insurance claims.

What is SDI Online?

The Employment Development Department's (EDD) SDI Online system allows physicians/practitioners to process Disability Insurance and Paid Family Leave claims faster and easier.

SDI Online is simple to use and available 24 hours a day.

Create an account at no cost in less than 10 minutes!



How to Access SDI Online

To create an SDI Online account, you will need the following information:

- Legal name (and suffix if applicable), Social Security number, and date of birth.
- A valid physical address and phone number.
- Medical license type, number, and expiration date.
- A valid e-mail address.
- California driver license or California identification card number.

Visit www.edd.ca.gov/disability/SDI_Online.htm and select SDI Online Registration.

Under the **Physicians/Practitioners** section, select **Continue to Physician/Practitioner Registration**.

Resources for SDI Online



For more information about SDI Online, visit our website at www.edd.ca.gov/disability.

For tutorials to help guide you through SDI Online, visit www.edd.ca.gov/Disability/SDI_Online_Tutorials.htm.

For frequently asked questions about SDI Online, visit http://www.edd.ca.gov/Disability/FAQ_State_Disability_Insurance_Online.htm.

For assistance, call our phone line dedicated to physicians/practitioners, 855-342-3645.

Contact DIBoutreach@edd.ca.gov to schedule an SDI Online presentation for your office.